

WMS Guide

For Hardware Settings

507100-02-09-W-E-111105-01

Copyright

© 2005, NewSoft Technology Corp. All Rights Reserved. No portion of this document may be copied or reproduced in any manner without prior written permission from NewSoft Technology Corp. (NewSoft)

NewSoft has no warranties to this documentation and disclaims any implied warranty of merchantability or fitness for a particular purpose. All information contained herein is subject to change without notice.

All sample images and electronic files included in the documentation and distribution materials are copyrighted by their respective photographers and are not to be copied or reproduced in any manner.

Trademarks

All trademarks are the properties of their respective owners.

www.newsoftinc.com

www.newsoft.com.tw

www.newsoft.co.jp

www.newsoft.eu.com

www.newsoft.com.cn

Content

Chapter 1	<i>Starting up the WMS.....</i>	<i>1</i>
Chapter 2	<i>Setting up the WMS.....</i>	<i>4</i>
	Status	4
	Setup	5
	Maintenance	7
	Change Username/Password	7
	Download WMS	8
	Site Survey	8

Chapter 1 Starting up the WMS

Here is a description of how to configure and log in to the WMS.

1. After the WMS Receiver Box has been connected, turn it on and wait for 10 seconds.



We recommend using the Ethernet LAN port to connect to the WMS Receiver Box. Either by direct connection or through a hub device. The Ethernet cable for the direct connection is not required to be of the cross type.

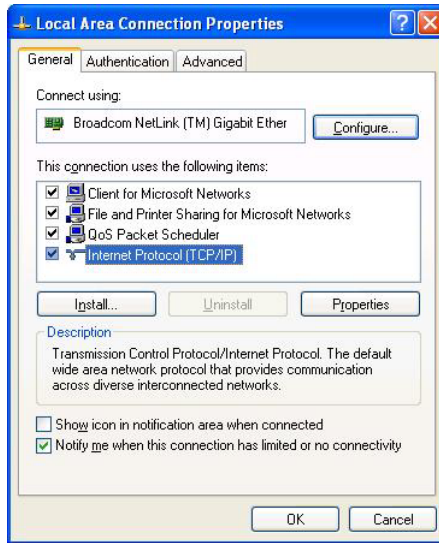
2. You must set the network adapter to the same network segment before connecting to the WMS Receiver Box.



The adapter cannot use a DHCP client since the WMS Receiver Box supports DHCP clients but not DHCP servers.

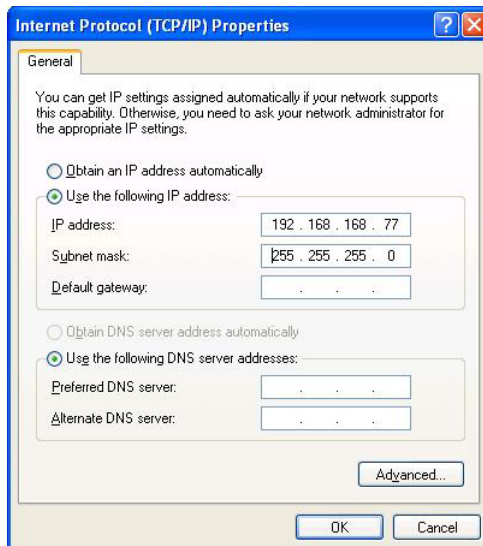
Here is how to set up the IP address.

- a. From the Windows Control Panel, open **Network Connections**, click **Local Area Connection**, and then click **Properties**. You will see the following dialog box.



- b. Click **Internet Protocol (TCP/IP)** and change the **IP address** to a number between 192.168.168.2 and 192.168.168.254. (Don't use 192.168.168.30).

Type 255.255.255.0 for the **Subnet mask**.



Example of an IP Address


3. Use your Internet browser to open <http://192.168.168.30/> to see the configuration page for the WMS Receiver Box. Type "admin" as User name, and "1234" for Password.

::: Welcome to WMS 100 Image!

Login

Please enter user name and password

User Name	<input type="text"/>
Password	<input type="password"/>
<input type="button" value="OK"/> <input type="button" value="Cancel"/>	

 *You must disable your firewall and proxy settings. If the configuration page doesn't open, turn the device off and on to reset it.*

Chapter 2 Setting up the WMS

The main menu has all the controls for configuring your WMS 100.

Status

Under **Status**, you can view the current settings of the Ethernet LAN or WLAN.

Click **General and LAN** to see the Device Information and LAN Settings, including the MAC and IP address.

The screenshot shows the WMS 100 web interface. On the left, a sidebar menu is visible under the heading 'WMS 100 Image'. The 'Status' section is expanded, and 'General and LAN' is selected. The main content area is titled 'General Status' and contains two sections: 'Device Information' and 'LAN Settings'.

Device Information:	
Device Name:	NetVGA + Atheros Station 5004x/5006x
Firmware Version:	1.04 (2005/10/14 09:42) + Atheros 0.932 (5915)
Up Time:	0 days, 0 hours, 20 minutes, 33 seconds

LAN Settings:	
MAC Address:	00:0B:78:66:77:88
IP Address:	192.168.168.30
Subnet Mask:	255.255.255.0
Gateway:	192.168.168.1

Below the LAN Settings table is a 'Refresh' button.

WLAN settings can be seen by clicking **WLAN**.

- The **Region** setting will tell you if 802.11a Ad-hoc mode is supported or not. For region ETSI, the 802.11a 5 GHz Ad-hoc mode is not supported.
- The **Link Status** may be **Up**, indicating that it is connected to a WMS Sender, or **Down**, indicating that it is available for connecting.

WLAN Status	
Country	NO COUNTRY SET
Region	FCC1 FCCA
MAC Address:	00:90:4B:C7:38:DA
Link Status	Down
SSID	WMS100-IMAGE
Channel	11
BSSID	02:90:54:69:38:DA
Transmit Rate	24 Mbps
Radio	ON

Setup

Under Setup, you can choose **LAN** or **WLAN**.

LAN is used to choose DHCP or static for the IP address.

- If you select DHCP, you have to find the IP address by using another tool or by asking your MIS department if you ever need to reconfigure. An alternative would be to push and hold the **Reset** button on the WMS Receiver Box for more than 5 seconds to revert to the factory default IP address.
- If you change to another network segment, remember to configure the computer to the same network segment.

LAN Settings:

IP Address

Obtain IP address automatically (DHCP)

Use the following IP settings

IP Address:	192	168	168	30
Subnet Mask:	255	255	255	0
Default Gateway:	192	168	168	1

Use **WLAN** to change these settings.

- **Country** is used to identify the WLAN card set.
- **Region** is used to identify the radio certification. For example, FCC, ETSI.
- **SSID** is defaulted to use “WMS100-IMAGE”.
- **Channel & Transmission rate** is used to identify the transmission speed. Channels higher than 36 are for 802.11a (5 GHz). Transmission rates faster than 24 Mbps indicates that you can use 802.11a and 802.11g modes.



Some WLAN cards don't support the 802.11g Ad-hoc mode. These will use the IEEE standard 802.11b. The performance will be lower.

- If the channel is changed, a new Web page will open for the settings. After finishing the settings, click **Apply**.
- The default settings will be Channel 11, 802.11b, and 802.11g Ad-hoc mode.

The screenshot shows the 'WMS 100 Image' web interface. On the left is a navigation menu with the following items: Status, General and LAN, WLAN (selected), Set-Up, LAN, WLAN, Maintenance, Change Username/Password, Download WMS, and Site Survey. The main content area is titled 'WLAN Setting' and contains the following 'Wireless LAN Settings' form:

- Country: NO COUNTRY SET
- Region: FCC1 FCCA
- SSID: WMS100-IMAGE
- Network Type: adhoc
- Authentication Mode: Open System
- Channel: 11
- Transmit Rate: 24 Mbps
- 802.11A:
- 802.11B:
- 802.11G:
- Buttons: Apply, Cancel

Maintenance

Click to upgrade firmware or reset factory default and bridge functions.

WMS 100 Image

- Status
 - [General and LAN](#)
 - [WLAN](#)
- Set-Up
 - [LAN](#)
 - [WLAN](#)
 - [Maintenance](#)
 - [Change Username/Password](#)
 - [Download WMS](#)
 - [Site Survey](#)

WMS 100 Image :: Maintenance

Update Firmware	<input type="button" value="Update Firmware"/>
Factory Defaults	<input type="button" value="Reset to Defaults"/>
Reboot Bridge	<input type="button" value="Reboot Bridge"/>

Change Username/Password

Click for security control to restrict access to the WMS Receiver Box. You can press the **Reset** button for more than 5 seconds to get the default user name and password if you forget it. Only English alphanumeric characters are accepted for passwords.

WMS 100 Image

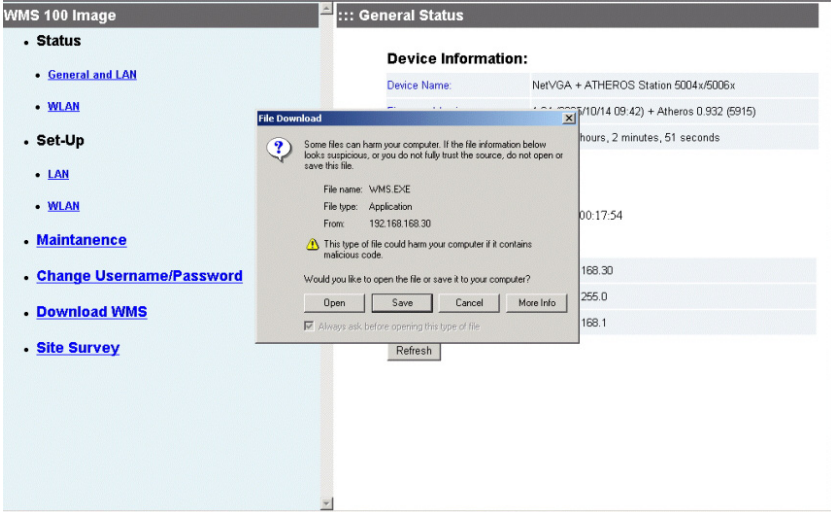
- Status
 - [General and LAN](#)
 - [WLAN](#)
- Set-Up
 - [LAN](#)
 - [WLAN](#)
 - [Maintenance](#)
 - [Change Username/Password](#)
 - [Download WMS](#)
 - [Site Survey](#)

WMS 100 Image :: Change Username and Password

Old Username:	<input type="text"/>
Old Password:	<input type="text"/>
New Username:	<input type="text"/>
New Password:	<input type="text"/>
Verify New Password:	<input type="text"/>
	<input type="button" value="Submit"/> <input type="button" value="Cancel"/>

Download WMS

Click to download the WMS software. It takes about 2 minute and 20 seconds. The program will be installed immediately.



Site Survey

This function is used to connect to any other SSID groups, especially Access Point.

